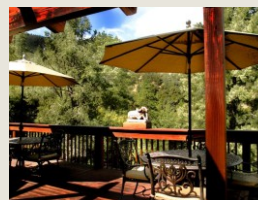
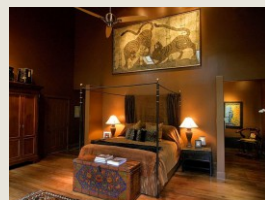
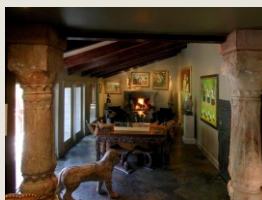


▲
PINE MOUNTAIN CLUB REAL ESTATE

Exquisite Design and Views from Mt. Pinos to Apache Saddle



1501 Banff Drive, Pine Mountain Club, California

Professionally designed interiors with elegant details can be seen throughout this home, from the slate and hardwood floors to the 18th century sandstone columns and matching fireplace that accentuate the living room. 3 Bedrooms, 3 Baths, 2 Car Garage, 2807 +/- square feet.

The professional chef's kitchen has just been remodeled and expanded. New built in shelving with granite details and a new skylight grace the adjacent sitting room. Both skylights have been enhanced with dramatic accent lighting. The formal dining room with teak hardwood floors offers plenty of space for entertaining guests. 13 skylights fill the home with light. The master suite has a loft like open space and the master bath features an enormous spa tub, walk in dual spray shower, huge closets, dual sinks and a separate water closet.

The property spans 2 lots on a ridge top with beautiful views of the mountains and forest. 1700 +/- square feet of redwood decks offer seclusion and space to enjoy the outdoors. On the lower level is a generous bonus room/office/guest quarters with sauna and private deck. Listed at \$499,900.00

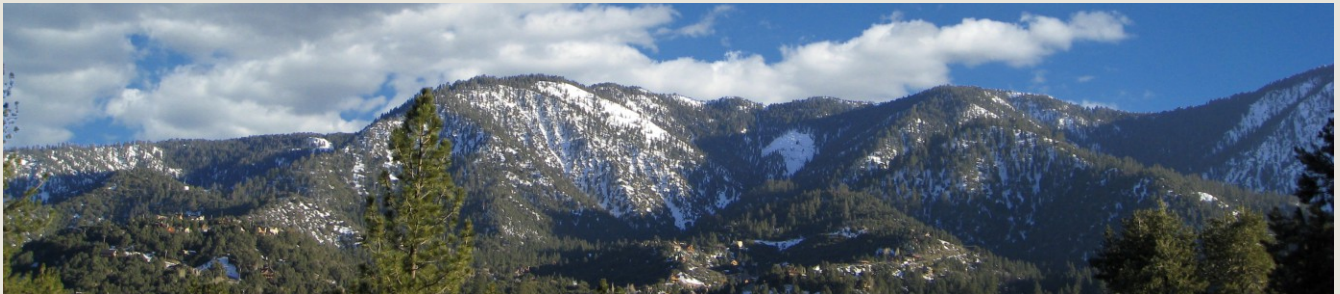
Club Membership Benefits include: SCGA rated golf course, swimming pool, equestrian center, tennis courts, clubhouse with restaurant and lounge, private roads with 24 hour security patrol and snow removal in the winter.

Jennings Realty
16233 Pine Valley Lane
Box 6368
Pine Mountain Club, CA 93222



661.242.1132
877.321.1717
661.242.1063 (Fax)
robertdeloach@gmail.com
DRE License - 01761364

ROBERT DELOACH, REALTOR, GRI, ePRO



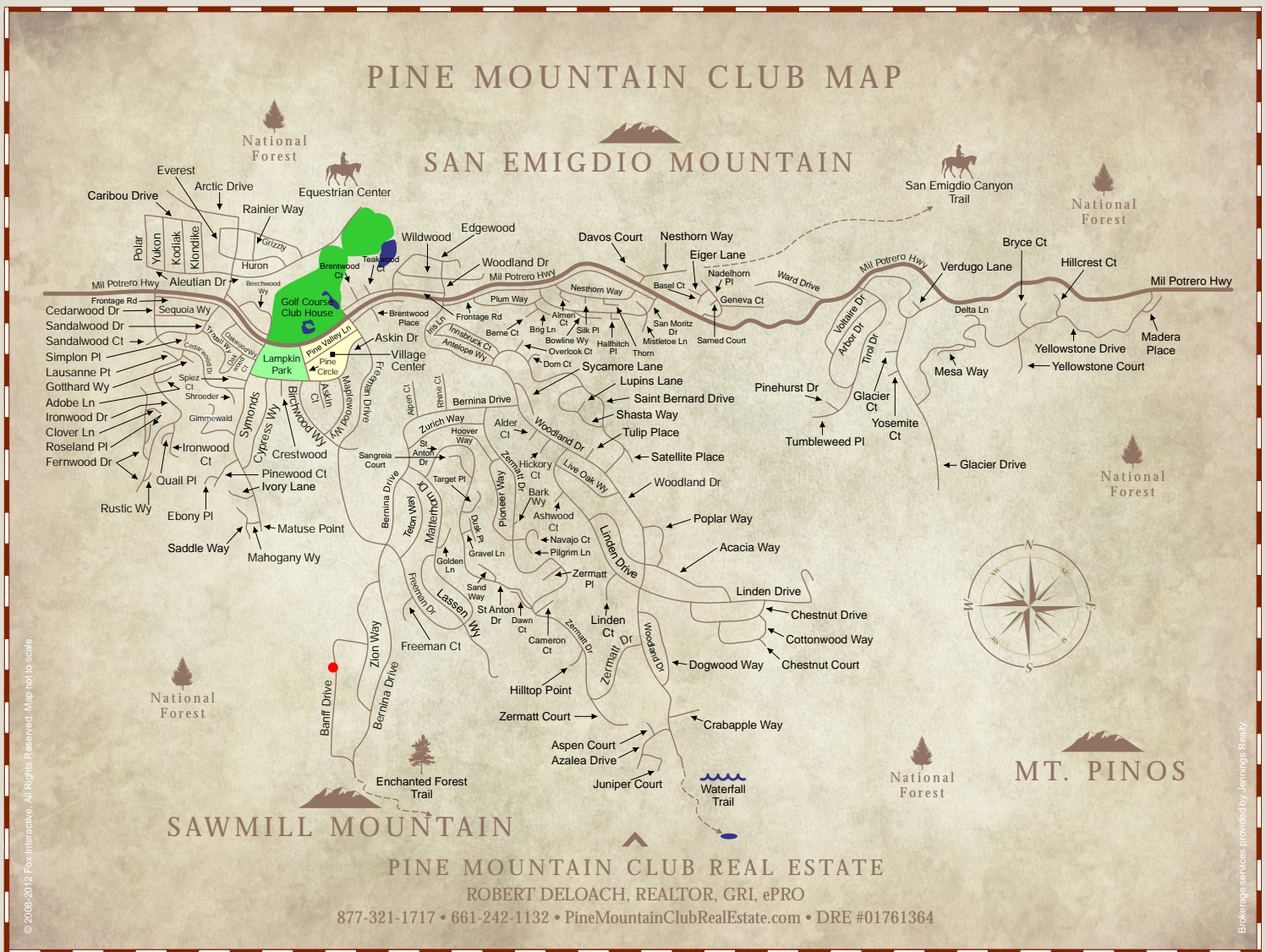

PINE MOUNTAIN CLUB REAL ESTATE

Jennings Realty
16233 Pine Valley Lane
Box 6368
Pine Mountain Club, CA 93222



661.242.1132
877.321.1717
661.242.1063 (Fax)
robertdeloach@gmail.com
DRE License - 01761364

ROBERT DELOACH, REALTOR, GRI, ePRO



From Interstate I-5

From either direction on I-5, take the Frazier Mountain Park Road Exit (205). Go west for 12 miles. Bear right onto Mil Potrero Highway and drive 6 miles into Pine Mountain Club. Pine Mountain Village is on the left. You will see the Village Center sign at the corner of Mil Potrero Highway and Freeman Drive. Turn left on Freeman Drive and turn right on Pine Valley Lane into the Center. Continue on Pine Valley Lane until you see the Jennings Realty sign on the right.

From the California Coast & 101 Freeway

From either direction on the 101 Freeway, take the CA-166 exit. Take CA-166 east for approximately 70 miles. Turn right onto Cerro Noroeste Road and proceed for approximately 25 miles into Pine Mountain. Pine Mountain Village is on the right. Continue past the Center and turn right on Freeman Drive. Turn right on Pine Valley Lane into the Center. Continue on Pine Valley Lane until you see the Jennings Realty sign on the right.

PINE MOUNTAIN CLUB REAL ESTATE

Jennings Realty
16233 Pine Valley Lane
Box 6368
Pine Mountain Club, CA 93222



661.242.1132
877.321.1717
661.242.1063 (Fax)
robertdeloach@gmail.com
DRE License - 01761364

ROBERT DELOACH, REALTOR, GRI, ePRO